

# ONE CYPRESSWOOD

9950 Cypresswood Drive  
FOR LEASE



## BUILDING FEATURES:

- Spaces available for immediate occupancy
- Three-stories, 28,541 NRSF
- 2.075 acres
- 138 space parking area
- 24-hour card-key access system
- Camera surveillance

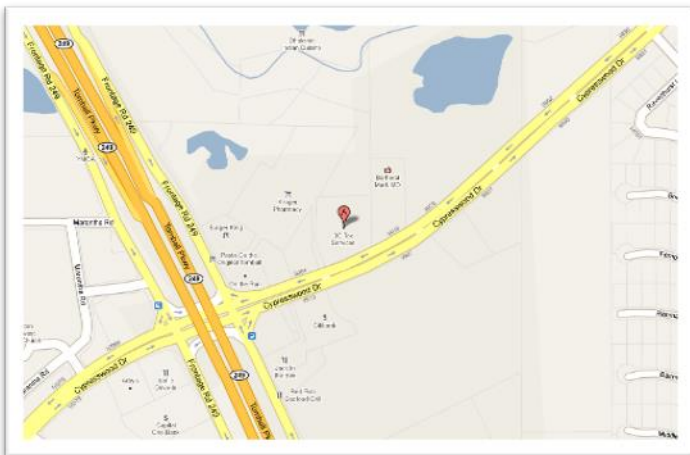
## FINANCIALS:

- Full service suites
- 1-5 year terms available

## EXECUTIVE SUITES AVAILABLE:

- Approx. 158 square feet and up
- Executive suites start at \$363 per month plus \$150 for Secretarial Services
- Located on the Second Floor of the Building

## LOCATION



## AREA AMENITIES:

- Immediate access to SH 249, FM 1960 and Beltway 8
- Minutes away from the HP campus
- Prestigious Champion Forest community
- Numerous retail, restaurant, fitness and banking outlets in The Vintage area
- Executive housing in immediate area

All data contained herein is from sources deemed to be reliable but has not been verified and is submitted without any warranty or representation, express or implied as to its accuracy. We assume no liability for errors or omissions of any kind including change of price, prior sale or withdrawal without notice.



# ONE CYPRESSWOOD

9950 Cypresswood Drive  
FOR LEASE



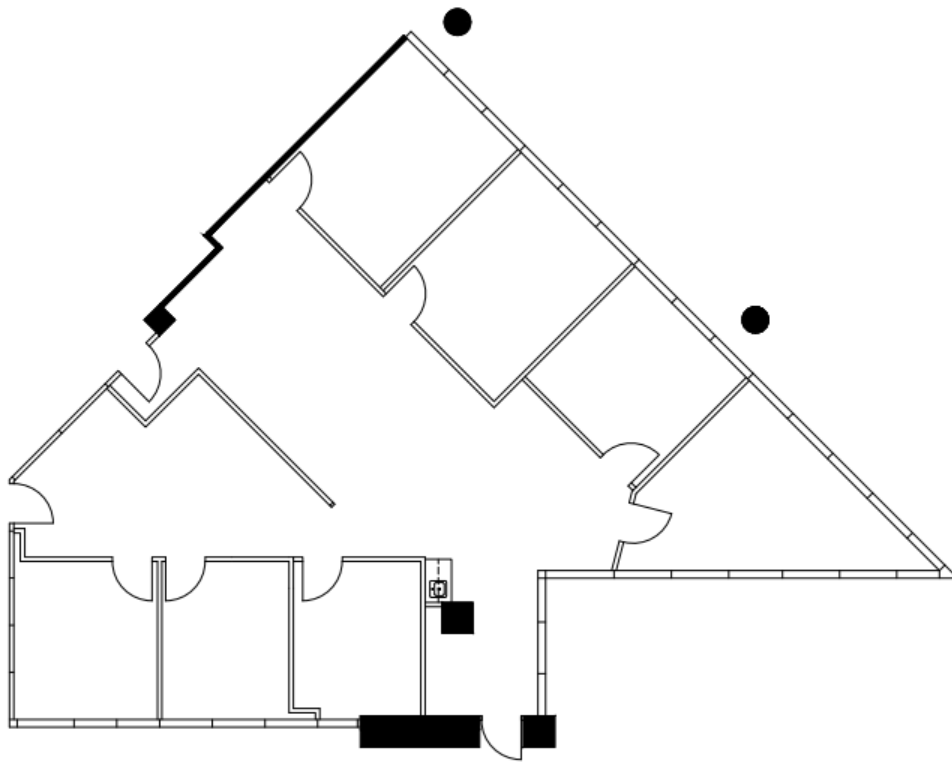
All data contained herein is from sources deemed to be reliable but has not been verified and is submitted without any warranty or representation, express or implied as to its accuracy. We assume no liability for errors or omissions of any kind including change of price, prior sale or withdrawal without notice.

# ONE CYPRESSWOOD

9950 Cypresswood Drive  
FOR LEASE

## SUITE 150 2,376 SQUARE FEET

- Reception/Bullpen
- 7 Window Offices
- Kitchen



All data contained herein is from sources deemed to be reliable but has not been verified and is submitted without any warranty or representation, express or implied as to its accuracy. We assume no liability for errors or omissions of any kind including change of price, prior sale or withdrawal without notice.

# ONE CYPRESSWOOD

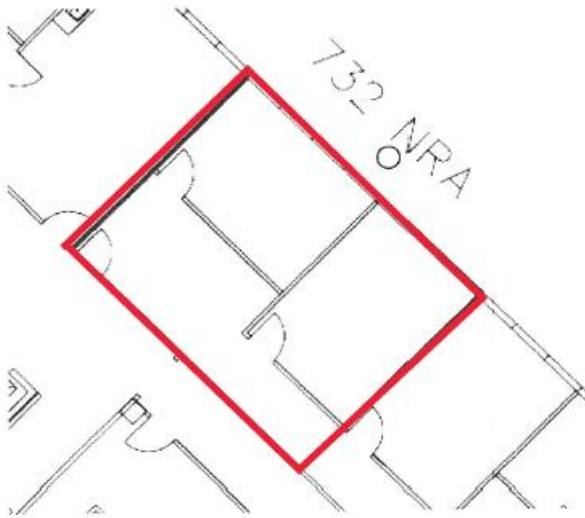
9950 Cypresswood Drive  
FOR LEASE

## SUITES 300 – 340 2,645 SQUARE FEET

**SUITE 300 and SUITE 340 are currently combined; Will divide**

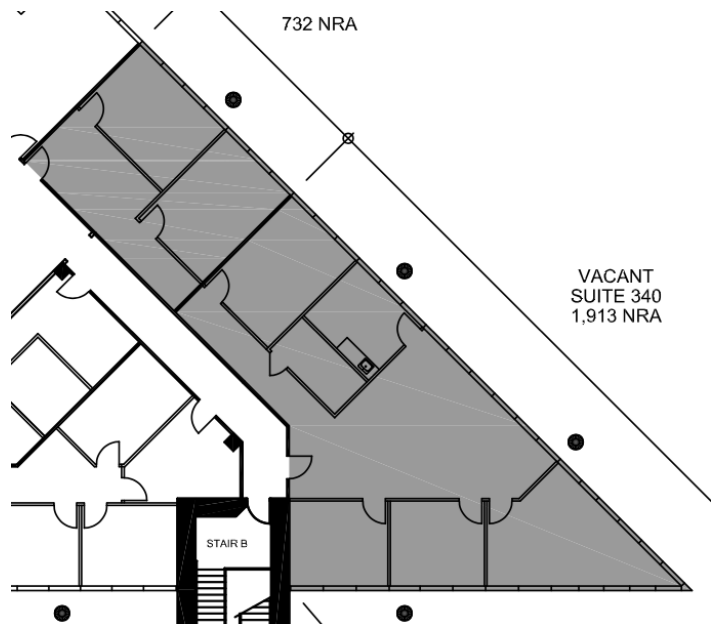
### Suite 300 732 SF

- Reception
- Two Executive Window Offices



### Suite 340 1,913 SF

- 6 Executive Window Offices
- Breakroom
- Storage
- Bullpen



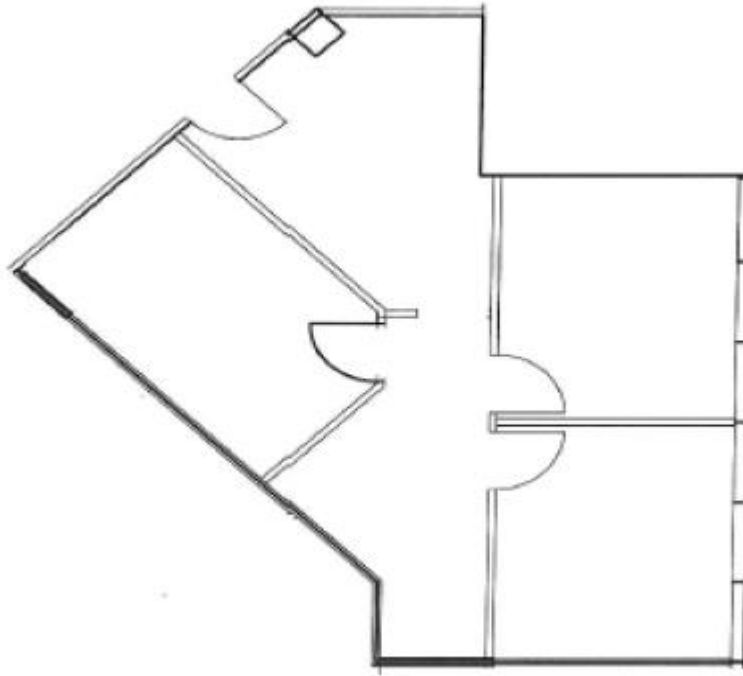
All data contained herein is from sources deemed to be reliable but has not been verified and is submitted without any warranty or representation, express or implied as to its accuracy. We assume no liability for errors or omissions of any kind including change of price, prior sale or withdrawal without notice.

# ONE CYPRESSWOOD

9950 Cypresswood Drive  
FOR LEASE

## SUITE 320 847 SQUARE FEET

- Reception
- Interior Office
- 2 Window Offices



All data contained herein is from sources deemed to be reliable but has not been verified and is submitted without any warranty or representation, express or implied as to its accuracy. We assume no liability for errors or omissions of any kind including change of price, prior sale or withdrawal without notice.

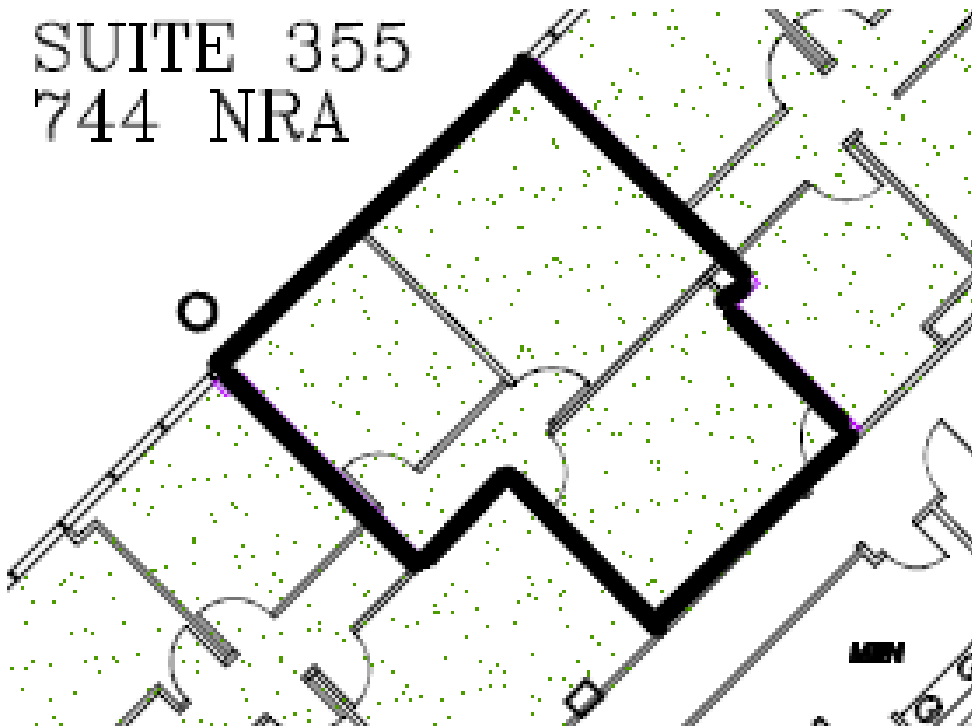
# ONE CYPRESSWOOD

9950 Cypresswood Drive  
FOR LEASE

**SUITE 355**  
**744 SQUARE FEET**

- Reception/Interior Office
- 2 Window Offices

SUITE 355  
744 NRA



All data contained herein is from sources deemed to be reliable but has not been verified and is submitted without any warranty or representation, express or implied as to its accuracy. We assume no liability for errors or omissions of any kind including change of price, prior sale or withdrawal without notice.

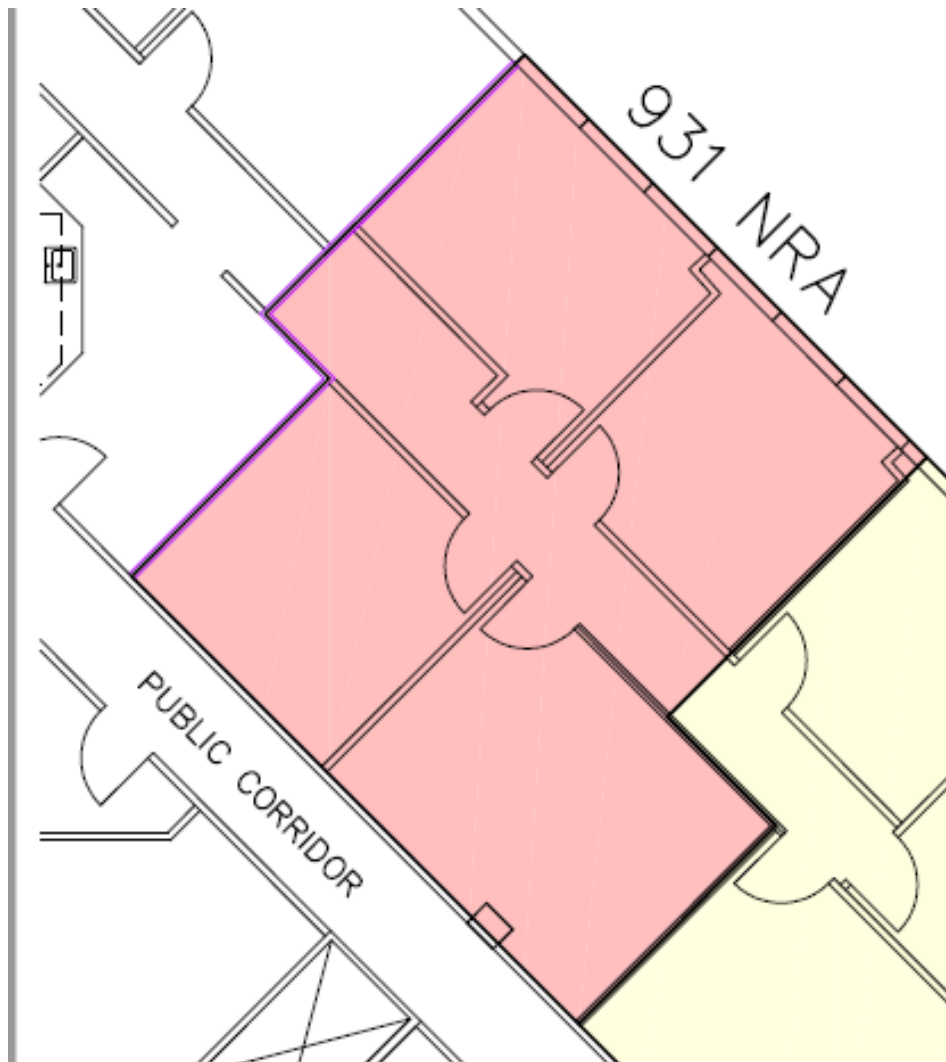


# ONE CYPRESSWOOD

9950 Cypresswood Drive  
FOR LEASE

## SUITE 360 931 SQUARE FEET

- Reception
- Interior Office
- 2 Window Offices



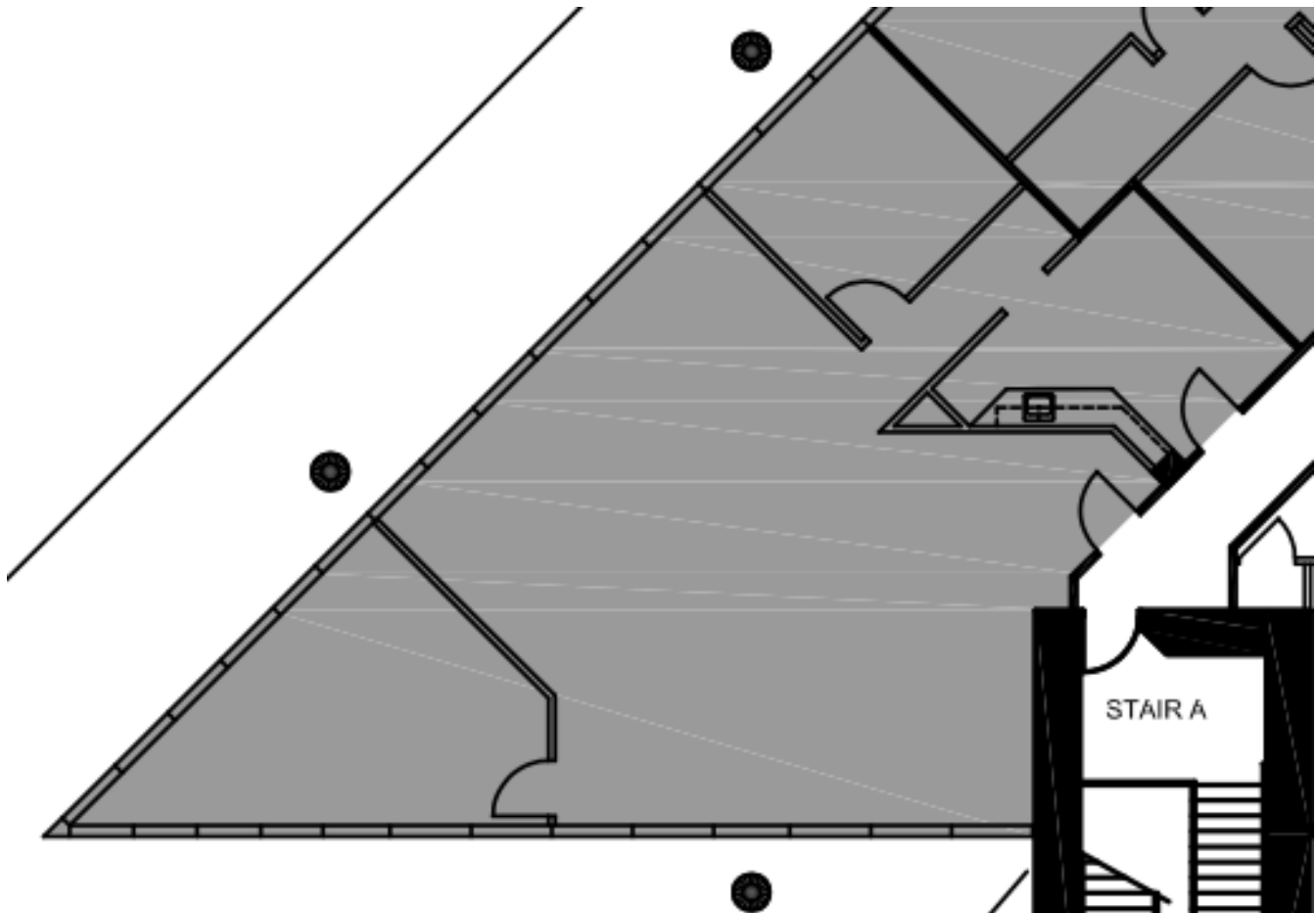
All data contained herein is from sources deemed to be reliable but has not been verified and is submitted without any warranty or representation, express or implied as to its accuracy. We assume no liability for errors or omissions of any kind including change of price, prior sale or withdrawal without notice.

# ONE CYPRESSWOOD

9950 Cypresswood Drive  
FOR LEASE

## SUITE 385 1,806 SQUARE FEET

- Bullpen
- Breakroom
- 1 Window Office
- 1 Executive Window Office



All data contained herein is from sources deemed to be reliable but has not been verified and is submitted without any warranty or representation, express or implied as to its accuracy. We assume no liability for errors or omissions of any kind including change of price, prior sale or withdrawal without notice.





## Information About Brokerage Services

Texas law requires all real estate licensees to give the following information about brokerage services to prospective buyers, tenants, sellers and landlords.

### TYPES OF REAL ESTATE LICENSE HOLDERS:

- **A BROKER** is responsible for all brokerage activities, including acts performed by sales agents sponsored by the broker.
- **A SALES AGENT** must be sponsored by a broker and works with clients on behalf of the broker.

### A BROKER'S MINIMUM DUTIES REQUIRED BY LAW (A client is the person or party that the broker represents):

- Put the interests of the client above all others, including the broker's own interests;
- Inform the client of any material information about the property or transaction received by the broker;
- Answer the client's questions and present any offer to or counter-offer from the client; and
- Treat all parties to a real estate transaction honestly and fairly.

### A LICENSE HOLDER CAN REPRESENT A PARTY IN A REAL ESTATE TRANSACTION:

**AS AGENT FOR OWNER (SELLER/LANDLORD):** The broker becomes the property owner's agent through an agreement with the owner, usually in a written listing to sell or property management agreement. An owner's agent must perform the broker's minimum duties above and must inform the owner of any material information about the property or transaction known by the agent, including information disclosed to the agent or subagent by the buyer or buyer's agent.

**AS AGENT FOR BUYER/TENANT:** The broker becomes the buyer/tenant's agent by agreeing to represent the buyer, usually through a written representation agreement. A buyer's agent must perform the broker's minimum duties above and must inform the buyer of any material information about the property or transaction known by the agent, including information disclosed to the agent by the seller or seller's agent.

**AS AGENT FOR BOTH - INTERMEDIARY:** To act as an intermediary between the parties the broker must first obtain the written agreement of each party to the transaction. The written agreement must state who will pay the broker and, in conspicuous bold or underlined print, set forth the broker's obligations as an intermediary. A broker who acts as an intermediary:

- Must treat all parties to the transaction impartially and fairly;
- May, with the parties' written consent, appoint a different license holder associated with the broker to each party (owner and buyer) to communicate with, provide opinions and advice to, and carry out the instructions of each party to the transaction.
- Must not, unless specifically authorized in writing to do so by the party, disclose:
  - that the owner will accept a price less than the written asking price;
  - that the buyer/tenant will pay a price greater than the price submitted in a written offer; and
  - any coincidental information or any other information that a party specifically instructs the broker in writing not to disclose, unless required to do so by law.

**AS SUBAGENT:** A license holder acts as a subagent when aiding a buyer in a transaction without an agreement to represent the buyer. A subagent can assist the buyer but does not represent the buyer and must place the interests of the owner first.

### TO AVOID DISPUTES, ALL AGREEMENTS BETWEEN YOU AND A BROKER SHOULD BE IN WRITING AND CLEARLY ESTABLISH:

- The broker's duties and responsibilities to you, and your obligations under the representation agreement.
- Who will pay the broker for services provided to you, when payment will be made and how the payment will be calculated.

**LICENSE HOLDER CONTACT INFORMATION:** This notice is being provided for information purposes. It does not create an obligation for you to use the broker's services. Please acknowledge receipt of this notice below and retain a copy for your records.

<b>B.Pennington Commercial Real Estate, Inc.</b>	<b>404012</b>	<b>brenda@penningtoncommercial.com</b>	<b>(713)621-5050</b>
Licensed Broker /Broker Firm Name or Primary Assumed Business Name	License No.	Email	Phone
<b>Brenda Pennington</b>	<b>341099</b>	<b>brenda@penningtoncommercial.com</b>	<b>(713)621-5050</b>
Designated Broker of Firm	License No.	Email	Phone
<b>Brenda Pennington</b>	<b>341099</b>	<b>brenda@penningtoncommercial.com</b>	<b>(713)621-5050</b>
Licensed Supervisor of Sales Agent/ Associate	License No.	Email	Phone
<b>Brenda Pennington</b>	<b>341099</b>	<b>brenda@penningtoncommercial.com</b>	<b>(713)621-5050</b>
Sales Agent/Associate's Name	License No.	Email	Phone

Buyer/Tenant/Seller/Landlord Initials

Date

Regulated by the Texas Real Estate Commission

Information available at [www.trec.texas.gov](http://www.trec.texas.gov)

This form was produced by the subscriber named below through Texas FormSource.

IABS 1-0 Date

TXR 2501

Brenda Pennington Commercial Real Estate, 19500 SH 249, Suite 330 Houston TX 77079  
BRENDA PENNINGTON

Phone: (713)621-5050 Fax:  
Produced with Lone Wolf Transactions (zipForm Edition) 231 Shearson Cr. Cambridge, Ontario, Canada N1T 1J5 [www.lwolf.com](http://www.lwolf.com)

26842 Riley Rd,